



Key Worker Booking Form

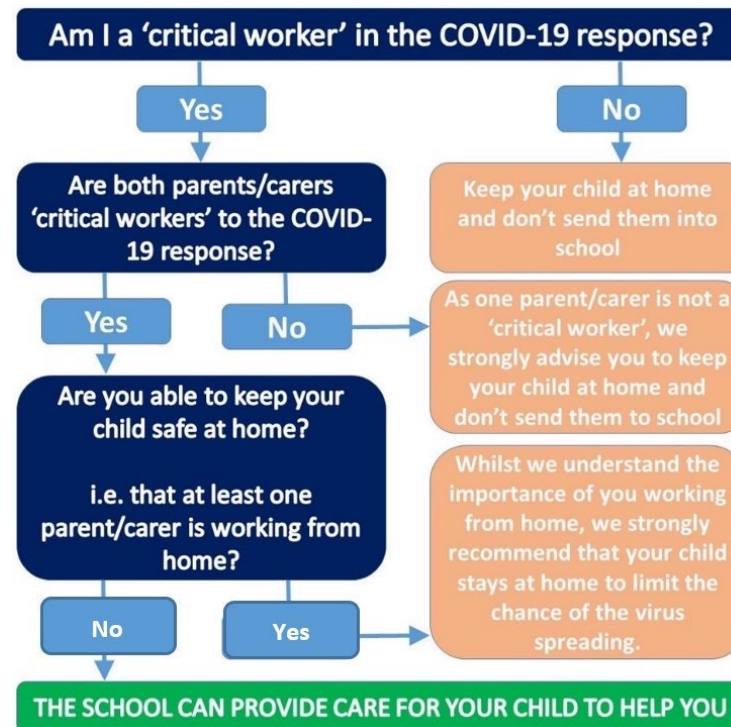
Child 1:

Child 2:

To allow us to plan for staff ratios and food provision, please complete this form and return to us by **Thursday** for the following week (you can book for more than one week at a time).

We are working to keep the school open for critical workers but would ask that you only send your child in when you have no alternative childcare. This will allow us to keep everyone safe.

If you wish your child to have school dinners, then please indicate on the form.





Week beginning	Monday	Tuesday	Wednesday	Thursday	Friday
23 rd March 2020					
Lunch required Y/N					

Week beginning	Monday	Tuesday	Wednesday	Thursday	Friday
30 th March 2020					
Lunch required Y/N					

Week beginning	Monday	Tuesday	Wednesday	Thursday	Friday
6 th April 2020					
Lunch required Y/N					

Week beginning	Monday	Tuesday	Wednesday	Thursday	Friday
13 th April 2020					
Lunch required Y/N					

Week beginning	Monday	Tuesday	Wednesday	Thursday	Friday
20 th April 2020					
Lunch required Y/N					

Week beginning	Monday	Tuesday	Wednesday	Thursday	Friday
27 th April 2020					
Lunch required Y/N					